

Component Placing, Electrical

Applicable for W595

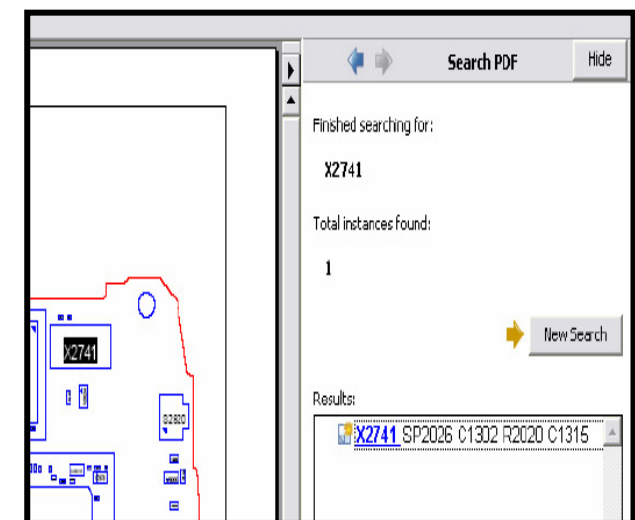
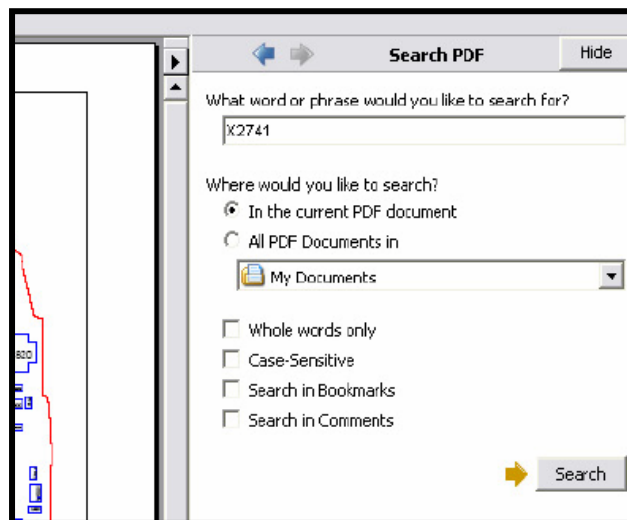
Contents

1	Mounting drawing table	2
2	Mounting drawing.....	3
2.1	Primary Side	4
2.2	Secondary Side	5
3	Revision history.....	6

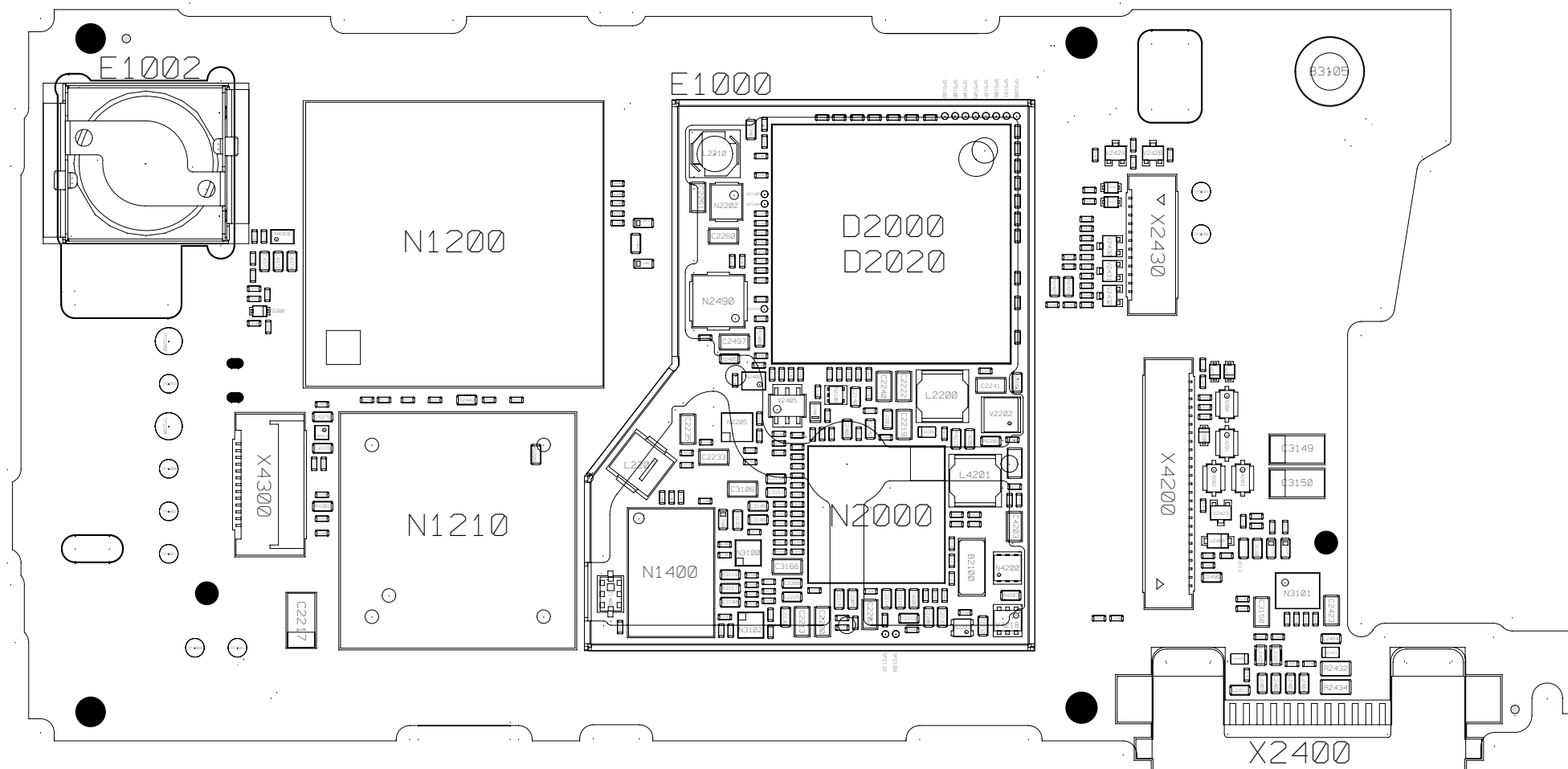
1 Mounting drawing table

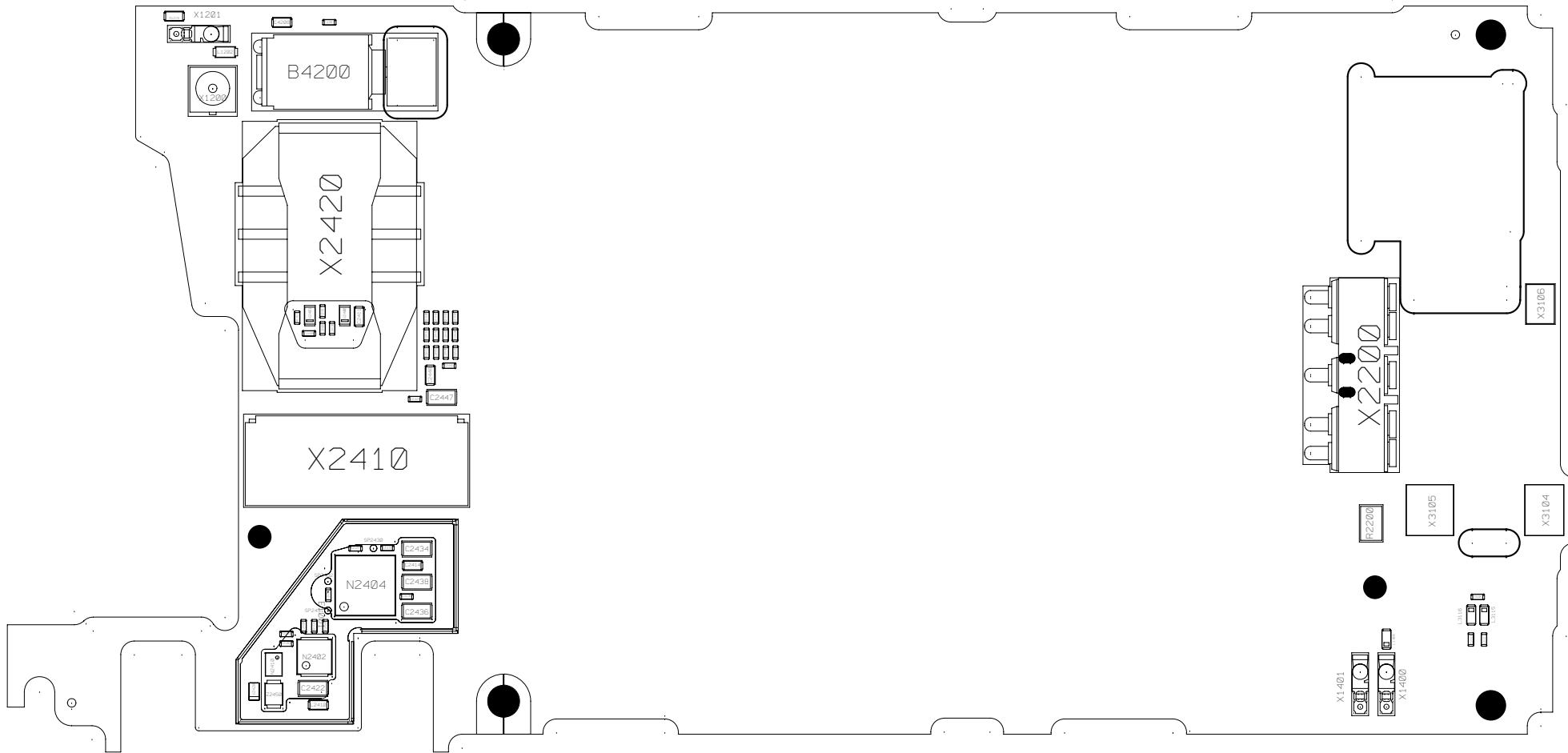
Board Number	Drawing	Comments
1206-3559_1	1207-2141	

By using the “Search” function and enter the component name you can find the position of the component
(Use Adobe Reader 7.0 or a later version). Example: You can see the component name highlighted on the circuit board (use zoom to enlarge).



2 Mounting drawing





3 Revision history

Rev.	Date	Changes / Comments
1	2008-09-26	Initial release